

3-BEDROOM

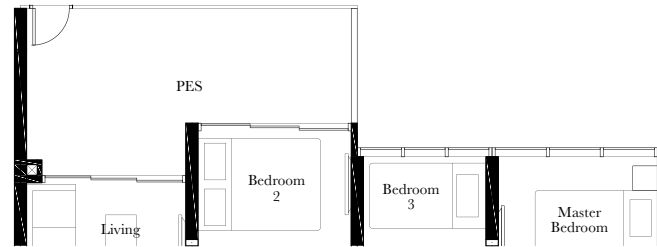
TYPE C1-P

81 SQ M / 872 SQ FT

BLK 3
#02-23*

BLK 7
#02-35*

BLK 9
#01-42
#02-43*



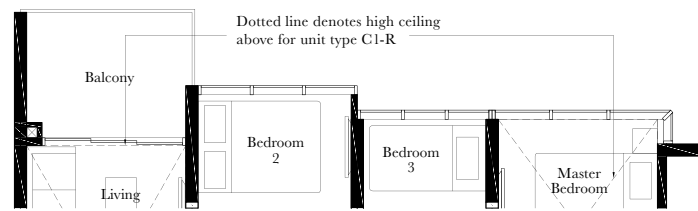
TYPE C1

74 SQ M / 797 SQ FT

BLK 3
#03-23* to #14-23*

BLK 7
#03-35* to #14-35*

BLK 9
#02-42 to #14-42
#03-43* to #14-43*



Applicable to unit #42 and #43 at Block 9

TYPE C1-R

97 SQ M / 1044 SQ FT

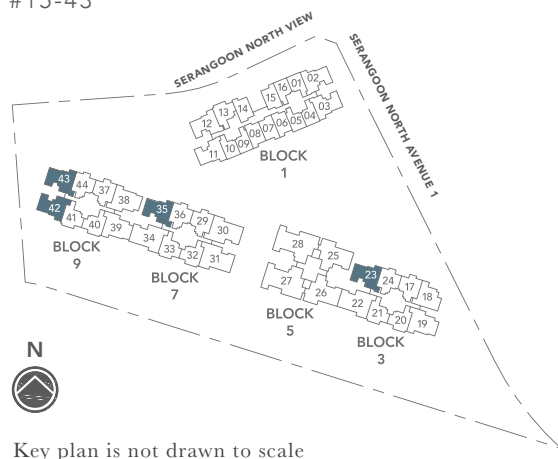
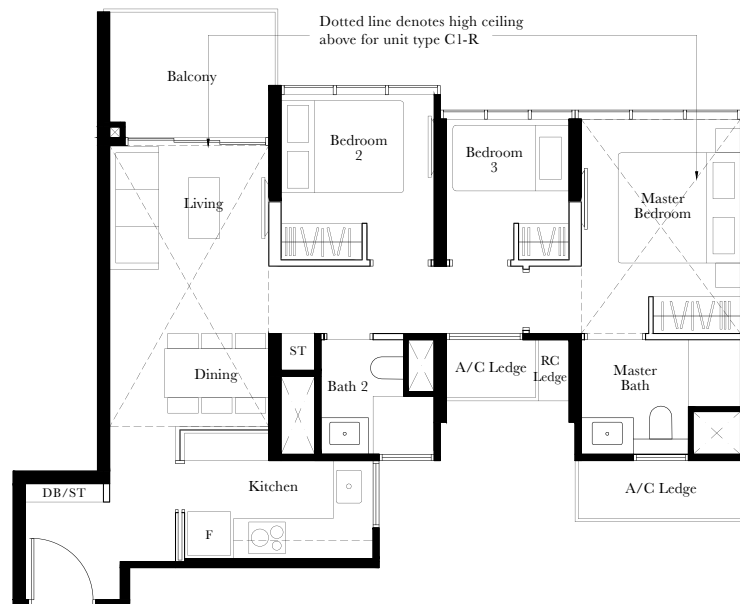
Including strata void area of 23 sq m / 248 sq ft above living, dining and master bedroom

Approximate 4.5 m floor to ceiling height at living, dining and master bedroom

BLK 3
#15-23*

BLK 7
#15-35*

BLK 9
#15-42
#15-43*



Key plan is not drawn to scale

*Mirror Image



AREA INCLUDES AIR-CON (A/C) LEDGE, PRIVATE ENCLOSED SPACE (PES), BALCONY AND STRATA VOID AREA WHERE APPLICABLE. SOME UNITS ARE MIRROR IMAGES OF THE APARTMENT PLANS SHOWN IN THE BROCHURE. PLEASE REFER TO THE KEY PLAN FOR ORIENTATION. THE PLANS ARE SUBJECT TO CHANGE AS MAY BE APPROVED BY RELEVANT AUTHORITIES. ALL FLOOR PLANS ARE APPROXIMATE MEASUREMENTS ONLY AND ARE SUBJECT TO GOVERNMENT RE-SURVEY. THE BALCONY SHALL NOT BE ENCLOSED UNLESS WITH THE APPROVED BALCONY SCREEN. FOR AN ILLUSTRATION OF THE APPROVED BALCONY SCREEN, PLEASE REFER TO THE DIAGRAM ANNEXED HERETO AS "BALCONY SCREEN".

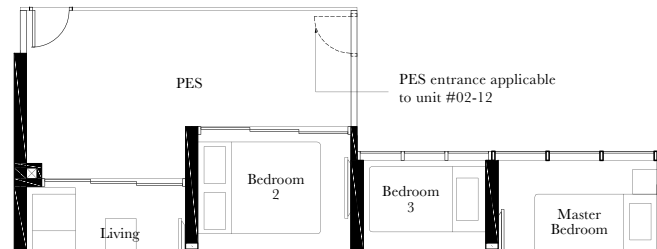
3-BEDROOM

TYPE C2-P

80 SQ M / 861 SQ FT

BLK 1

- #02-02
- #02-03*
- #02-11
- #02-12*

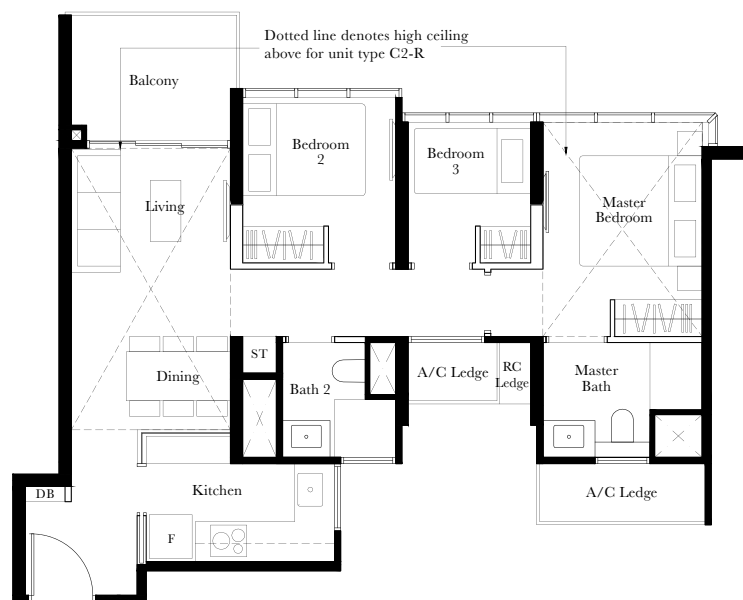


TYPE C2

73 SQ M / 786 SQ FT

BLK 1

- #03-02 to #14-02
- #03-03* to #14-03*
- #03-11 to #14-11
- #03-12* to #14-12*



TYPE C2-R

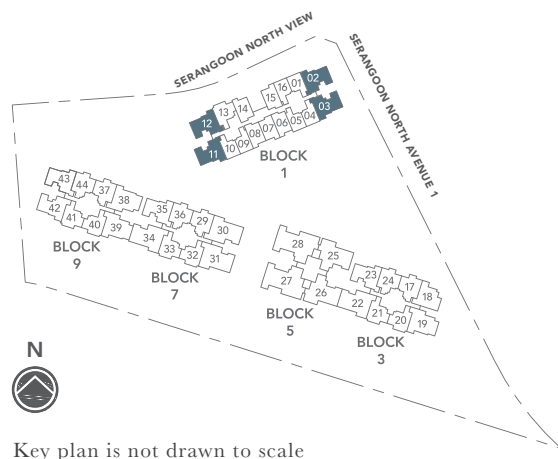
96 SQ M / 1033 SQ FT

Including strata void area of 23 sq m / 248 sq ft above living, dining and master bedroom

Approximate 4.5 m floor to ceiling height at living, dining and master bedroom

BLK 1

- #15-02
- #15-03*
- #15-11
- #15-12*



Key plan is not drawn to scale



AREA INCLUDES AIR-CON (A/C) LEDGE, PRIVATE ENCLOSED SPACE (PES), BALCONY AND STRATA VOID AREA WHERE APPLICABLE. SOME UNITS ARE MIRROR IMAGES OF THE APARTMENT PLANS SHOWN IN THE BROCHURE. PLEASE REFER TO THE KEY PLAN FOR ORIENTATION. THE PLANS ARE SUBJECT TO CHANGE AS MAY BE APPROVED BY RELEVANT AUTHORITIES. ALL FLOOR PLANS ARE APPROXIMATE MEASUREMENTS ONLY AND ARE SUBJECT TO GOVERNMENT RE-SURVEY. THE BALCONY SHALL NOT BE ENCLOSED UNLESS WITH THE APPROVED BALCONY SCREEN. FOR AN ILLUSTRATION OF THE APPROVED BALCONY SCREEN, PLEASE REFER TO THE DIAGRAM ANNEXED HERETO AS "BALCONY SCREEN".

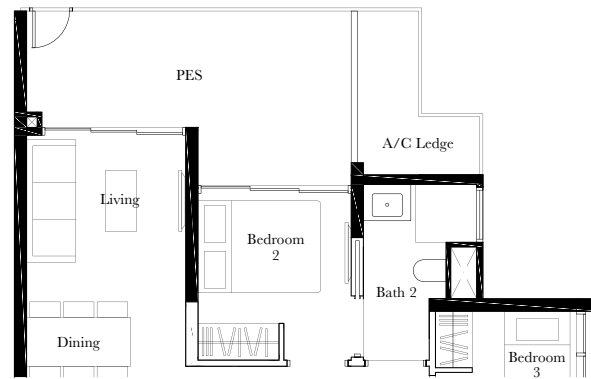
3-BEDROOM

TYPE C3-P

82 SQ M / 883 SQ FT

BLK 3

#02-18



TYPE C3

75 SQ M / 807 SQ FT

BLK 3

#03-18 to #14-18

TYPE C3-R

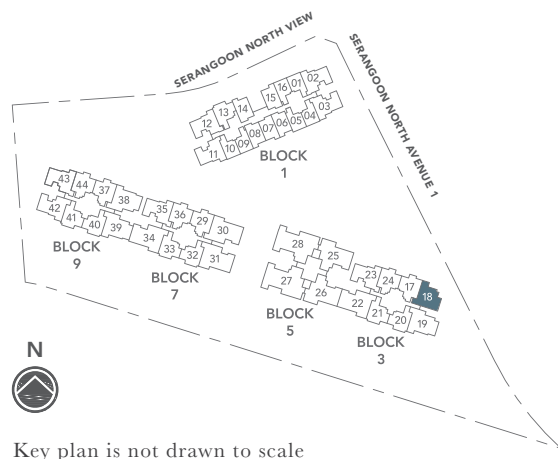
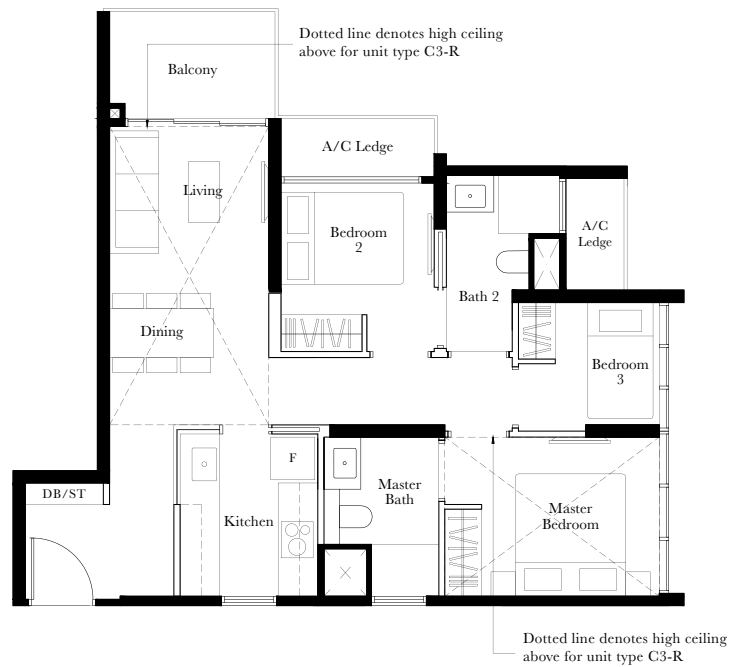
99 SQ M / 1066 SQ FT

Including strata void area of 24 sq m / 258 sq ft above living, dining and master bedroom

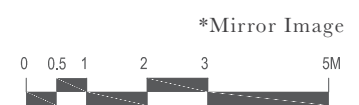
Approximate 4.5 m floor to ceiling height at living, dining and master bedroom

BLK 3

#15-18



Key plan is not drawn to scale



AREA INCLUDES AIR-CON (A/C) LEDGE, PRIVATE ENCLOSED SPACE (PES), BALCONY AND STRATA VOID AREA WHERE APPLICABLE. SOME UNITS ARE MIRROR IMAGES OF THE APARTMENT PLANS SHOWN IN THE BROCHURE. PLEASE REFER TO THE KEY PLAN FOR ORIENTATION. THE PLANS ARE SUBJECT TO CHANGE AS MAY BE APPROVED BY RELEVANT AUTHORITIES. ALL FLOOR PLANS ARE APPROXIMATE MEASUREMENTS ONLY AND ARE SUBJECT TO GOVERNMENT RE-SURVEY. THE BALCONY SHALL NOT BE ENCLOSED UNLESS WITH THE APPROVED BALCONY SCREEN. FOR AN ILLUSTRATION OF THE APPROVED BALCONY SCREEN, PLEASE REFER TO THE DIAGRAM ANNEXED HERETO AS "BALCONY SCREEN".